

DVR-100

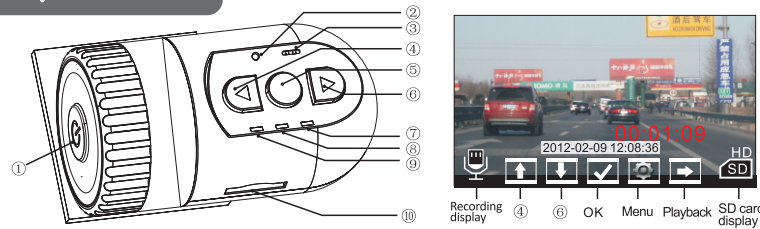
Car DVR (Car recorder)

User manual

Restoring the truth

Driving automatic video, Recording the whole road conditions, in case of suffering the accidents or malicious blackmail, It can playback scene to restore the truth and maintain your vital interests!

Speedy instructions



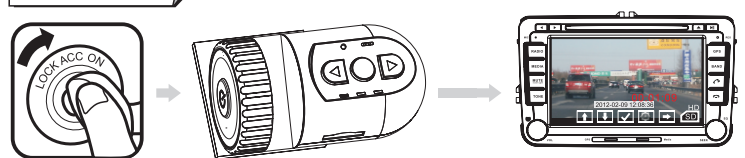
- ON OFF and video key: Short press for entering into mute video (no sounds), After that, please short press this key to stop video.
- Reset key: when the unit is met program crash (system halted), please press this key (if need to restore the factories, please enter into menu settings).
- Microphone Key
- Short press this key to enter into playback function, so that, it can play flipping up feature under the playback condition and menu.
- Video key, menu key, when make short press this key, the video will be with sounds. Re-press this key which can stop video, long press to enter into menu setting.
- When make the video, through short press this key, it can zoom magnification, Under the state of menu and playback condition, it can play flipping down function.
- When make the recording and video, the indicator light keeps long brightness, When SD card is invalid or without SD card, the indicator light keeps twinkle.
- When running the video playback, the indicator light keeps twinkle, when pausing the video playback, the indicator light keep long brightness, when the video is changed suddenly, the indicator keeps long brightness.
- When running the video and recording, the indicator light keeps long brightness, When the video is mute, the indicator light keeps twinkle, when the video is changed suddenly, the indicator keeps long brightness.
- If Micro SD card slot is inserted into other SD card, it will clear away the datum (information) in the SD card by itself.

Indicator state table

	Video	Playback	Recording	Function
				Video(mute)
				Recording and video
				Stop video
				The Video which is changed suddenly
				Video playback
				Playback pausing
				invalid or valid micro SD card
				Micro SD card is memory full

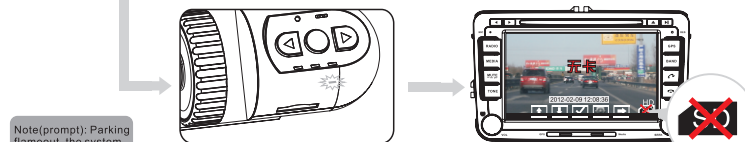
Function description

Auto-record (in mute)



Automotive Starters

When the red indicator light is on, it is entered into auto-mute video, also, in the video. It can be synchronous in car DVD player to play. It will play a section video each 150 seconds and will be shown on a continuous loop (The 4GB card of HD module can record 40 minutes).

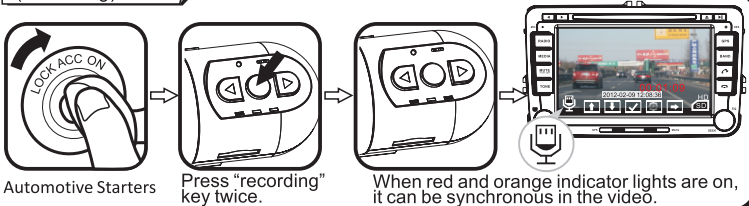


Note(prompt): Parking flameout, the system won't stop continuing to video automatically until 15 seconds.

When here is invalid or valid micro SD card, orange light will be twinkling, and it can show normal video input but without SD card indication (instruction).

3

Hand operated (recording) video

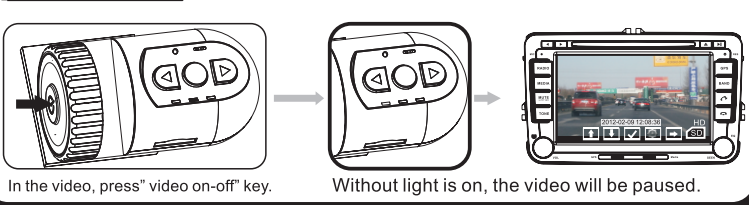


Automotive Starters

Press "recording" key twice.

When red and orange indicator lights are on, it can be synchronous in the video.

Hand operated to make auto-pausing (video)

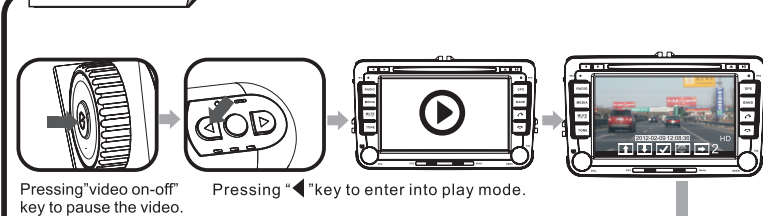


In the video, press "video on-off" key.

Without light is on, the video will be paused.

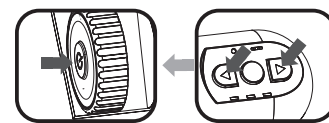
4

Car DVD play



Pressing "video on-off" key to pause the video.

Pressing "◀" key to enter into play mode.

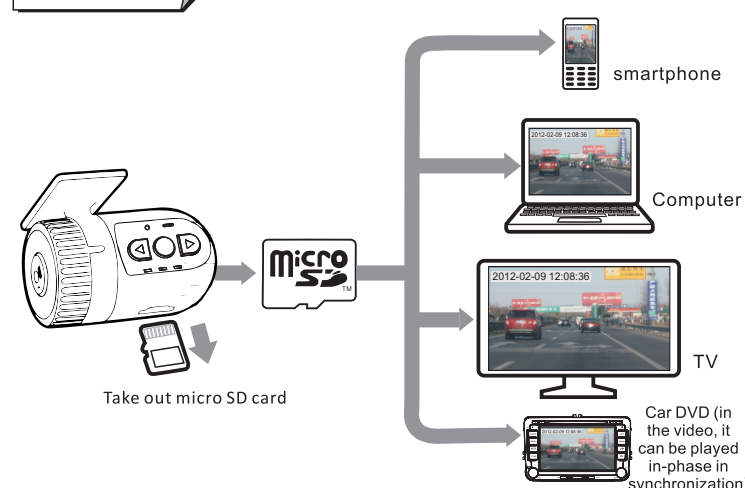


Pressing "video on-off" key, play or pause the video.

Pressing "◀" key to choose last playback; Press "▶" key to choose next section.

5

Other ways' play



Take out micro SD card

Car DVD (in the video, it can be played in-phase in synchronization)

6

The video which is changed suddenly (Mutation video)

When the acceleration sensor detected more than the advanced set value, which will automatically enter into mutation video.

Crash

General video or the state of video pausing. unexpected (mutation) situation

It can reserve 15 seconds on the micro SD card at least before and after unexpected situation.

7

Time adjustment

Pressing "Video on-off" key to pause the video. Long press "recording" key twice, it can popup menu interface. Pressing "◀▶" key to choose the date setting, after that, to press "recording" key to confirm.

Settings
 YYYY/HH/DD
 2012/01/01
 00:05:09

Video input Settings
 Video output format NTSC
 Date Turn off
 Settings

Pressing "◀▶" key to choose display format, long press "recording" key to choose seconds, minutes, hours, dates, months and years, after that, please re-press "◀▶" key to adjust the numerals and press "recording" to confirm.

Pressing "▶▶" key to choose setting, after that, to press "recording" key to confirm.

Long press "recording" key to quit time setting.

8

System converting

Video input Settings
 Video output format NTSC
 Date
 PAL

If it is in the video, please press pausing video, after that, long press "recording" twice to popup menu interface. Pressing "◀▶" key to choose video output, to press "recording" to tune out "NTSC/PAL" system, pressing "◀▶" to choose related system, to press "recording" key to confirm, after that, to long press "recording" to exit menu.

System

9

Caution

AIR BAG

Don't place it on the cover of gasbag

Don't obscure vision

Please place it in the active zone of rain wiper

11

Viewing angle is more than bend down

Viewing angle is more than face upward

Viewing angle slope

12

Technical parameters

- Imaging sensor: Wide Dynamic (WDR) CMOS.
- Camera lens: Hd wide-angle lens.
- Effective pixels: support 640X480, 1280X720
- G sensor: Three axis stereo detection.
- Frame rate: $\geq 25f/S$
- compress mode: H.264
- Format: Supports AVI format; Circulation records
- Video interruption: $\leq 120mS$
- Memorizer: Supporting TF memory card (512MB-32GB)
- Starting time: $\leq 4S$
- Work voltage: 10-16V
- Working(operating) current: $\leq 400mA$
- quiescent current(After turning off ACC): $\leq 5mA$

Notes

1. This product can not be installed in this location which will keep out the sight of the driver.
2. Please install this product once correctly and firmly. If you need to change the installation location, please change 3M adhesive, otherwise, it can be caused the product falling(drop).
3. Under such surrounding between light and shade are changed rapidly, such as a tunnel portal, backlight strong or under the light ray of night, a little poor image quality.
4. If you are driving under the state of backlighting in the morning or in the evening, the image quality will have a bit poor.
5. Meeting close overtaking or meeting, in the images recorded, something will be showed in distorting.
6. The legal disputes and privacy leak which is brought by the product video recording function, The users are responsible for them by themselves.
7. Car DVR(Car recorder) is car accessories, when you are driving, please don't operate this product. Our company will not be responsible for any result or damage therefrom.

Warranty period: this product has one year warranty period since shipping date, if it is met any components faults, we will provide the maintenance in free of charge.

13

Installation instructions

Product component

Setting tool

Installation circuit schematic diagram

Wiring schematics

Jointing DVD or other displayer

Black Jointing GND Ground
 Green Jointing ACC
 Red Jointing B+

10

Breakdown(fault) checking method is as below

1. When the working indicator doesn't light and can't run video, how to do?
 (1) Opening ACC;
 (2) Correctly connecting the product power cable (line);
2. When the orange indicator is still on(flickering), how to do?
 (1) Turning off ACC, correctly inserting into valid micro SD card;
 (2) The storage space of valid micro SD card must between 256M-32GB;
 (3) The effective micro SD card file system must be as FAT32;
3. When the green indicator keep long lighting or flickering, how to do?
 (1) The system in the state of video playback, manually press "video on-off" key to open video function.
 (2) To restart the car, let the product enter into video automatically;
4. During you are driving the car to make video, there is no video output, how to do?
 (1) To ensure the DVD has been opened, and also need to open AUX (Auxiliary Input). Some part of DVD need to shut off iPod function.;
 (2) To check if the video stamard is matching, long press "recording" key, after that, to convert video output format.
5. Video pictures are not synchronized or no color, how to do?
 (1) If the video stamard can't be matched, then, long press "recording" to convert into video output format.
6. If the time and date showed not correct, how to do?
 (1) To re-adjust the time and date according to instruction book;
7. It can't be powered off in 15 seconds after turning off ACC, how to do?
 (1) To check if the white line is connected to car ACC line correctly;
 (2) After turning off ACC, please check if ACC line is still with electricity, if yes, Please find another ACC line to connect again;
 (3) Pressing product reset button to enter into the state of restoring factory settings ;
8. When the recorded video can't play or can't play smoothly in the computer, mobile phone, TV etc. equipments, how to do?
 (1) Correctly connect the device to micro SD card effectively;
 (2) To use the player which can support MP4 files play;
 (3) If the CPU and memory of this equipment are too small, for example, on current market, The CPU and memory of GPS are a little small all and the player won't be very smoothly, then, please try to change other equipments to play.

14