

# **[USER MANUAL]**

## **CAR AUDIO NAVIGATION SYSTEM**

NAVI/DVD/CD/MP3/RADIO/USB

# CONTENTS

WARNING .....	2
PANEL CONTROLS .....	3
MAIN MENU OPERATIONS .....	5
DVD OPERATIONS .....	6
SD/USB OPERATIONS .....	9
VCDC OPERATIONS .....	10
iPod / iPhone OPERATIONS .....	11
RADIO OPERATIONS .....	12
AUX1 / AUX2 OPERATIONS .....	12
Bluetooth OPERATIONS .....	13
TV OPERATIONS .....	14
SETUP/EQ OPERATIONS .....	15
VEHICLE SETTINGS OPERATIONS .....	16

## WARNING

- For your safety, the driver should not watch any video sources and/or operate the controls while driving. Please note that watching and operating any video sources while driving are prohibited by law in some countries. Also, while driving, keep the volume to a level at which external sounds can be heard.
- When using the navigation system, follow the precautions listed below. After reading this manual, be sure to keep it in a handy place (such as the glove box of your car).
- This navigation system should not be used to replace your own judgment. No itinerary suggested by this navigation system should ever override any highway regulations, your own judgment, or a knowledge of safe driving practices. Do not follow the navigation system's suggested itinerary if it would cause you to perform a dangerous or illegal act, place you in a dangerous situation, or take you into an area you consider unsafe.
- The advice provided by the navigation system is to be regarded as a suggestion only. There may be times when the navigation system displays the vehicle's location incorrectly, fails to suggest the shortest route, or fails to direct you to your desired destination. In such instances, rely on your own driving judgment, taking into account the driving conditions at the time.
- Do not use the navigation system to locate emergency services. The database does not contain a complete listing of emergency services such as police stations, fire halls, hospitals and walk-in clinics. Please show discretion and ask for directions in such instances.
- As the driver, you alone are responsible for your driving safety.
  - In order to avoid a traffic accident, do not operate the system while driving.
  - In order to avoid a traffic accident, operate the system only when the vehicle is stopped at a safe place and the parking brake is on.
  - In order to avoid a traffic accident or traffic offense, remember that actual road conditions and traffic regulations take precedence over the information contained on the navigation system.
  - The software may contain inaccurate or incomplete information due to the passage of time, changing circumstances, and the sources of information used. Please respect current traffic conditions and regulations at all times while driving.
  - Where actual road conditions and highway regulations differ from the information contained on the navigation system, abide by the highway regulations.
  - Keep the amount of time spent viewing the screen while driving to a strict minimum.
- The navigation system does not provide, nor represent in any way information on: traffic and highway regulations; technical aspects of the vehicle including weight, height, width, load and speed limits; road conditions including grade, percentage of incline and surface conditions; obstacles such as the height and width of bridges and tunnels; and other current driving or road conditions. Always rely on your own judgment when driving a car, taking into account current driving conditions.
- Do not disassemble or modify this unit. It may cause an accident, fire, or electric shock.
- Do not use this unit when a trouble exists, such as no screen content appears or no sound is audible. It may cause an accident, fire, or electric shock. For that case, consult your authorized dealer or a nearest Clarion service center.
- In case of a problem, such as any material has been entered in the unit, the unit gets wet, or smoke or strange smells come out of the unit, etc., stop using this unit immediately, and consult your authorized dealer or a nearest Clarion service center.
- Using it in that condition may cause an accident, fire, or electric shock.
- Use a fuse with the same specification only when replacing the fuse.
- Using a fuse with a different specification may causes a fire.
- For the installation of this unit or a change in the installation, ask your authorized dealer for safety. Professional skills and experiences are required to do so.

## PANEL CONTROLS



### [ PWR/VOL ] Knob

- Press this key to power on the system in power off mode.
- Keep pressing this key more than 2 second to turn off the system when system is in power on mode.
- Rotate the knob to increase or decrease the volume.

### [ Eject ] button

- Press to eject disc from unit.

### [ MENU ] Button

- Press this button to display main menu, press again to return current source.

### [ FM/AM ] Button

- Press this button to enter Radio mode.

- On Radio mode interface, Press this button to change band, FM1-FM2-FM3-AM1-AM2.

### [ NAVI ] Button

- Press this button to enter navigation mode; Press again to return current source.

### [ MAP / MEDIA ] Slot

- MAP: Insert a microSD with navigation map, the microSD card is only for navigation. Please don't remove it.
- MEDIA: Insert a microSD with audio, video and picture format files.the microSD card slot is only for media.

### [ IR ] SENSOR

- Receiver for the remote control unit (operating range: 30 degree in all directions).

# MAIN MENU OPERATIONS



No.	Name	Function
1	Navi	Click the button to display the Navigation mode
2	Radio	Click the button to display the Radio Audio mode
3	Bluetooth	Click the button to display the Bluetooth mode
4	DVD	Click the button to display the DVD Audio mode
5	USB	Click the button to display the USB Audio mode

6	TV	Click the button to display the Analog TV mode
7	AUX	Click the button to display the AuxIn1 mode
8	SD	Click the button to display the SD mode
9	Clock	Display clock, touch enter screensaver
10	Setting Button	Click the button to display the setting menu

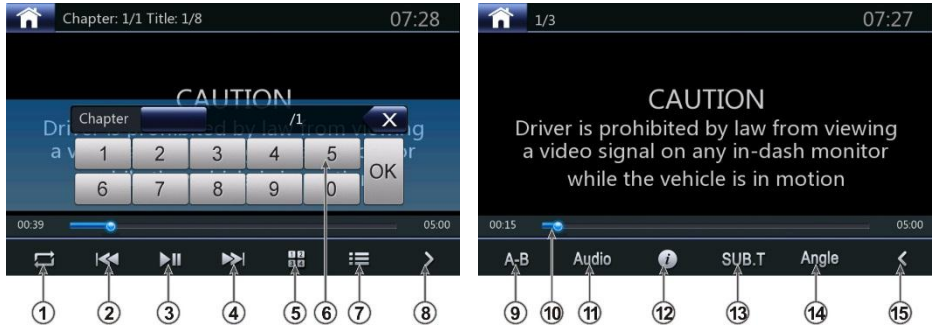
# DVD OPERATIONS

## 1. DATA DISC and CD DISC Player operations



Number	Function
1	Home Button, return to main menu
2	List Button, turn to list page
3	Previous Track /Fast Backward Button
4	Play/Pause Button
5	Playback Seek bar,
6	Next Track/Fast Forward Button
7	EQ Button, turn to EQ setting page
8	Direct Searching Button
9	Shuffle Button
10	Repeat Button, While playing MP3/WMA touch the button can switch between Repeat Track Repeat Folder and Repeat Off.
11	Direct enter key number, input the track number that you want to play back with key.
12	Previous Page Button, return to previous page (ID3 interface)
13	Audio Branch Button, turn to DVD Audio files list
14	Video Branch Button, turn to DVD video files list
15	Picture Branch Button, turn to DV picture files list


## 2. DVD Video DISC Player operations



Number	Function
1	Repeat Button
2	Previous Track / Fast Backward Button
3	Play/Pause Button
4	Next Track/Fast Forward Button
5	Direct Searching Button
6	Direct enter key, Input the number of the title/chapter that you want to play with key
7	List Button, turn to list page Or Disc menu.
8	Next operation buttons Page
9	A-B repeat Button
10	Playback Seek bar,
11	Audio Button,
12	Info Button, Press to display DVD play information.
13	Subtitle Button
14	Angle Button
15	Previous page Button

### Using the DVD Title Menu

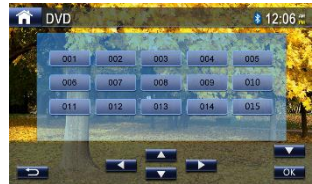
On DVD discs containing two or more titles, you can select from the title menu for playback.

1. Showing the DVD Video menu, touch [  ] button during playback.

The title menu screen appears.

\*\*\*Depending on the disc, the title menu may not be called\*\*\*

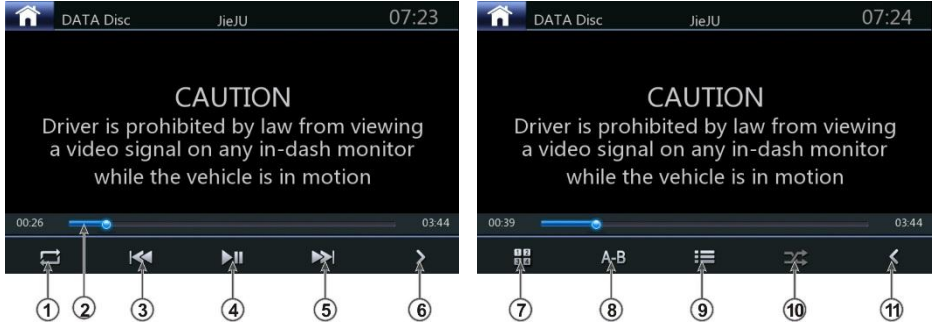
2. Touch the title menu screen.
3. Select the items in the title menu screen by [ **directional** ] buttons.



\*\*\*Depending on the disc, items may not be selected with the directional buttons \*\*\*

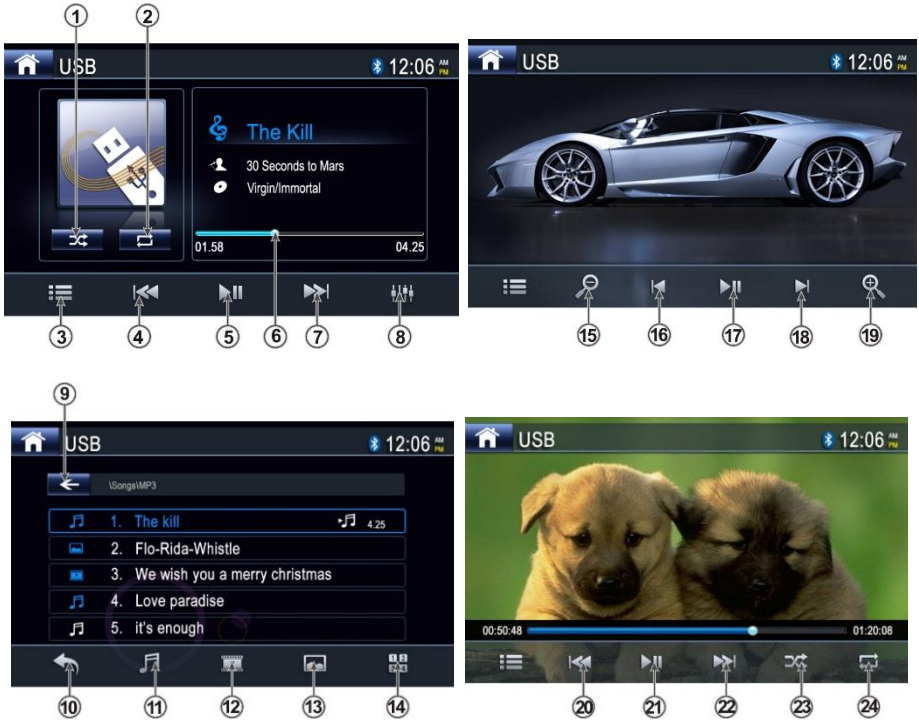
4. Touch [ **OK** ] button to fix on the selected item.

### 3. DATA DISC-Video Player operations



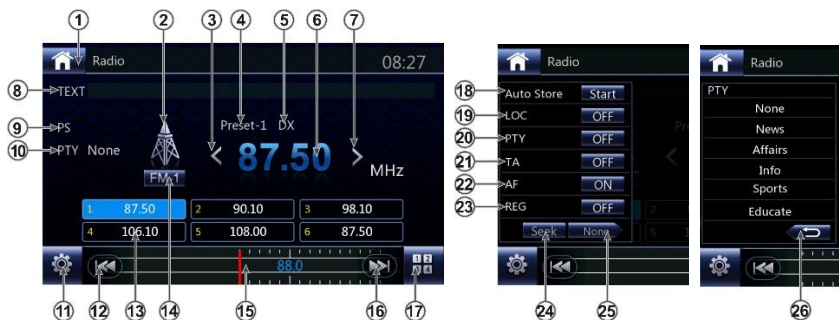
Number	Function
1	Repeat Button
2	Playback Seek bar,
3	Previous Track / Fast Backward Button
4	Play/Pause Button
5	Next Track/Fast Forward Button
6	Next operation buttons Page
7	Direct Searching Button
8	A-B repeat Button
9	List Button, turn to list page Or Disc menu.
10	Shuffle Button
11	Previous page Button

# SD/USB OPERATIONS



Number	Function
1	Shuffle Button
2	Repeat Button
3	List Button, turn to list page
4	Previous Track /Fast Backward Button
5	Play/Pause Button
6	Playback Seek bar
7	Next Track/Fast Forward Button
8	EQ Button, turn to EQ setting page
9	Parent folder Button, open parent folder
10	Previous Page Button, return to previous page
11	Audio Branch Button, turn to SD/USB audio
12	Video Branch Button, turn to SD/USB video
13	Picture Branch Button, turn to SD/USB picture
14	Direct Searching Button
15 / 16	Zoom in / zoom out the picture
16 / 17 / 18	Pictures slide sorter operation
20--24	The function same as DVD Operation

## RADIO OPERATIONS



No.	Function	No.	Function
1	Click the button to Main menu	2	Radio signal strength indicator
3	Step down button	4	Current preset channel index
5	LOC/DX indictor	6	Current channel frequency
7	Seek up button	8	Broadcast Text info
9	The station name	10	The Radio Program type
11	Setting button	12	Prev channel
13	Preset list, can be drag left/right to change page	14	Band switch button,
15	Frequency Scale Ruler	16	next channel
17	Direct select button, quickly turn to the channel by inputting frequency.	18	Auto store
19	LOC/DX select button	20	PTY on/off button
21	TA on/off button	22	AF on/off button
23	REG button, auto REG/REG off	24	Seek frequency button, Seek the same PI frequency
25	The Radio Program button, turn to The Radio Program page	26	Back to Prev set page

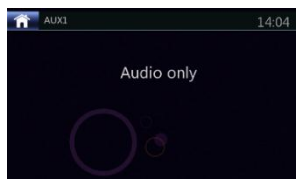
## AUX OPERATIONS

External peripheral devices, including a game console, camcorder, iPod/iPhone, etc. can be connected to the AUX connector on the front or back of this unit using the A/V media cables.

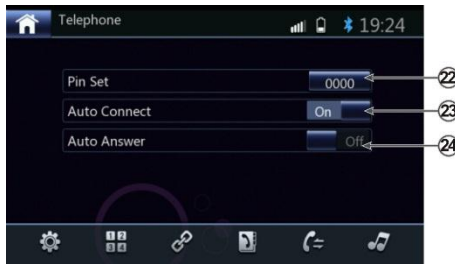
### Switching to AUX IN / AV IN mode

- Press [AUX ] button on Main Menu to select desired mode (when unit is reading). If the external device connected to AUX input have audio signal, the unit will broadcast audio of external device.

You cannot directly control external devices connected to AUX input.



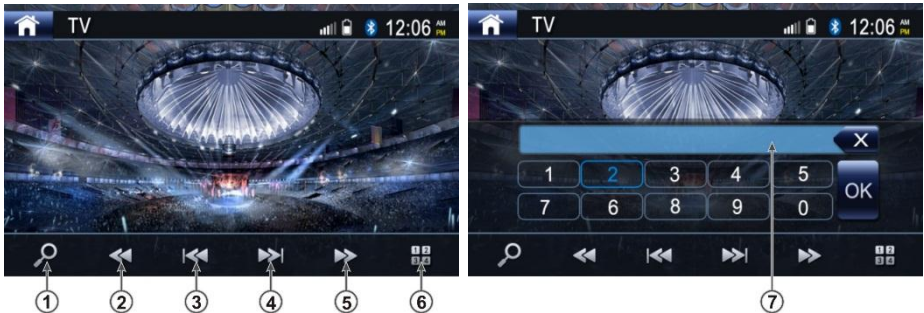
# Bluetooth OPERATIONS



No.	Function	No.	Function
1	Phone battery state indicator	2	Phone signal indicator
3	Setting page button	4	Dial number page button
5	Pair device page button	6	Contacts page button
7	Call history page button	8	A2DP page button
9	Connect/Disconnect button	10	Delete device button
11	Pair button	12	Search button
13	Dialed out history	14	Received history
15	Missed history	16	Delete inputted number

17	Dial button	18	Mute mic Button
19	Audio transfer Button	20	DTMF keyboard
21	Hung up/Reject call Button	22	Pin set Button
23	Select auto connect or not	24	Select auto answer or not
25	Previous track Button	26	Play/Pause Button
27	Next track Button	28	Stop Button

## TV OPERATIONS



[1] Search channel

[2] Previous channel

[3] Seek down

[4] Seek up

[5] Next channel

[6] Direct select button. Click it, one key board will be pop up.

[7] Direct select key board. Input channel number, TV will turn to the channel you want.

# SETUP / EQ OPERATIONS

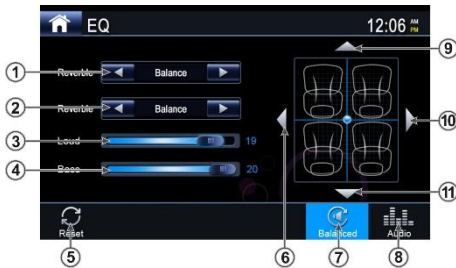
## System setup operations



ICON	Function
	General Button
	System Info Button
	Time Info Button
	EQ Button, turn to EQ setting page
	Others Function Button

	Pre Item Button
	Next Item Button
	Slide Button (turn on/turn off)
	Find Exe File Button
	Dec Button
	Add Button

## EQ operations



No.	Function
1	Reverb Type Setting
2	Low Pass Filter Setting
3	Subwoofer Setting
4	Loudness Setting
5	Reset Button, reset all Settings
6	Sound Balance Setting -- Left

7	Balance Button, turn to sound balance settings
8	EQ Button, turn to 10 brand settings page
9	Sound Balance Setting -- Forward
10	Sound Backward -- right
11	Sound Balance Setting -- Backward
12	EQ Type Settings
13	EQ Button, turn to 10 brand settings page

